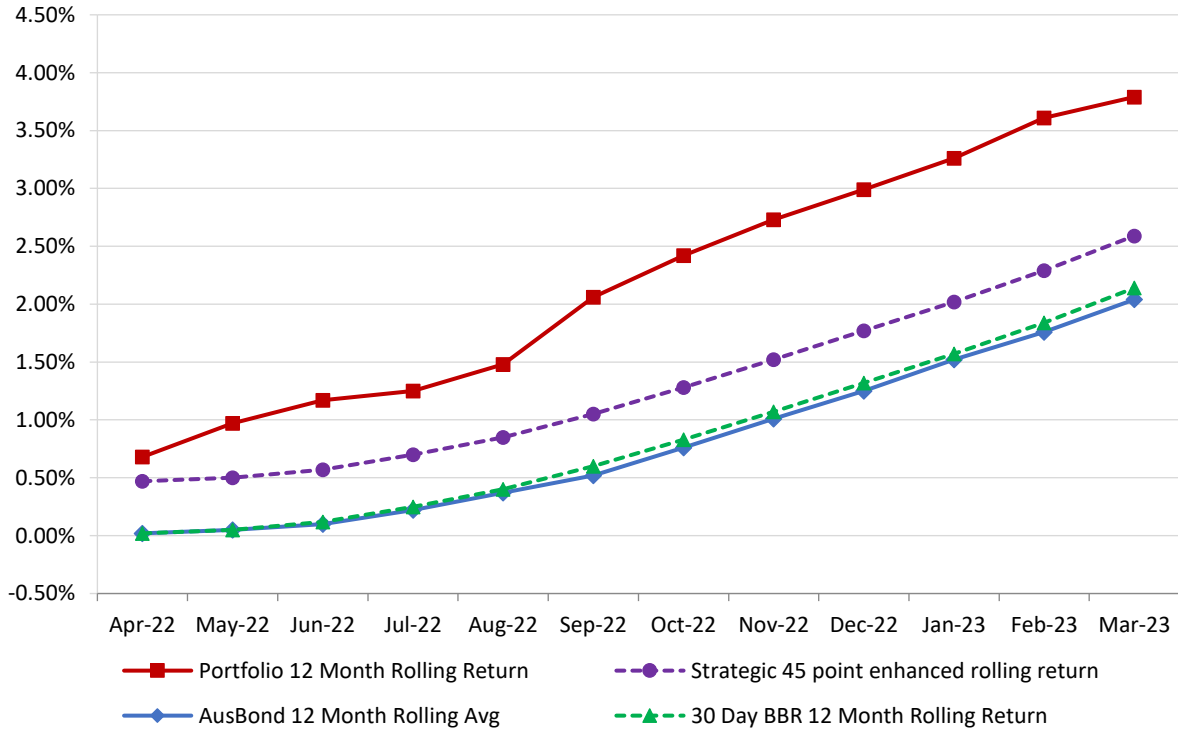


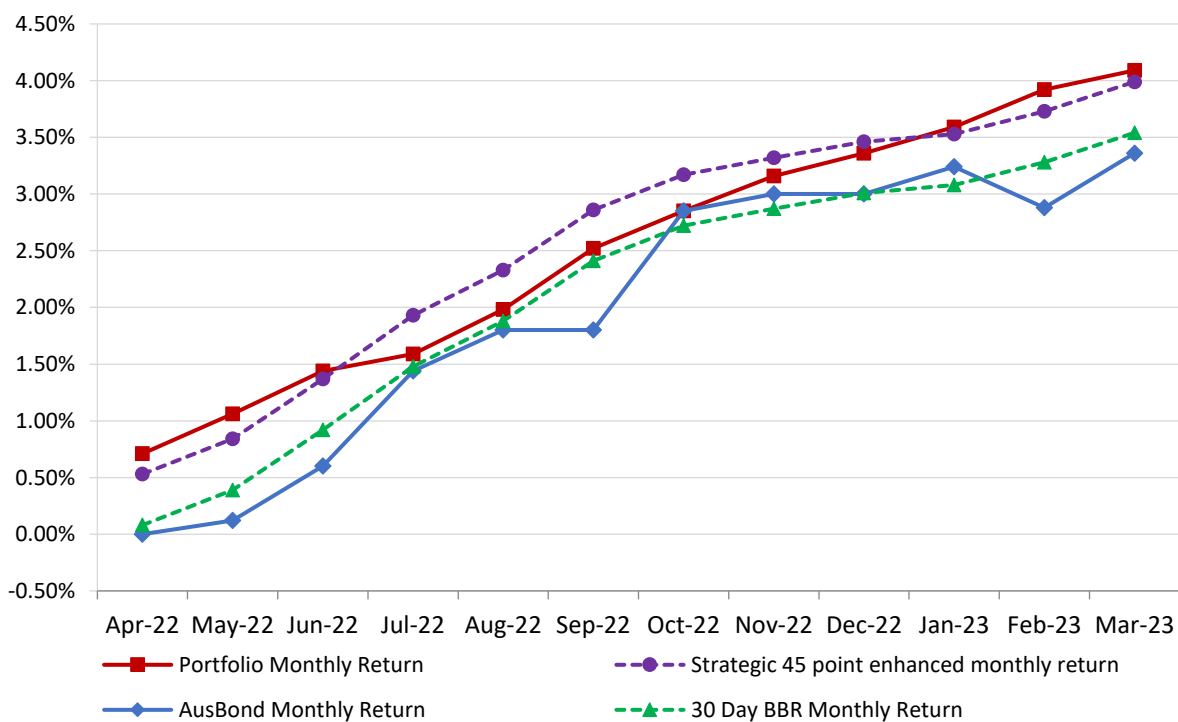
Attachment B

**Investment Performance
as at 31 March 2023**

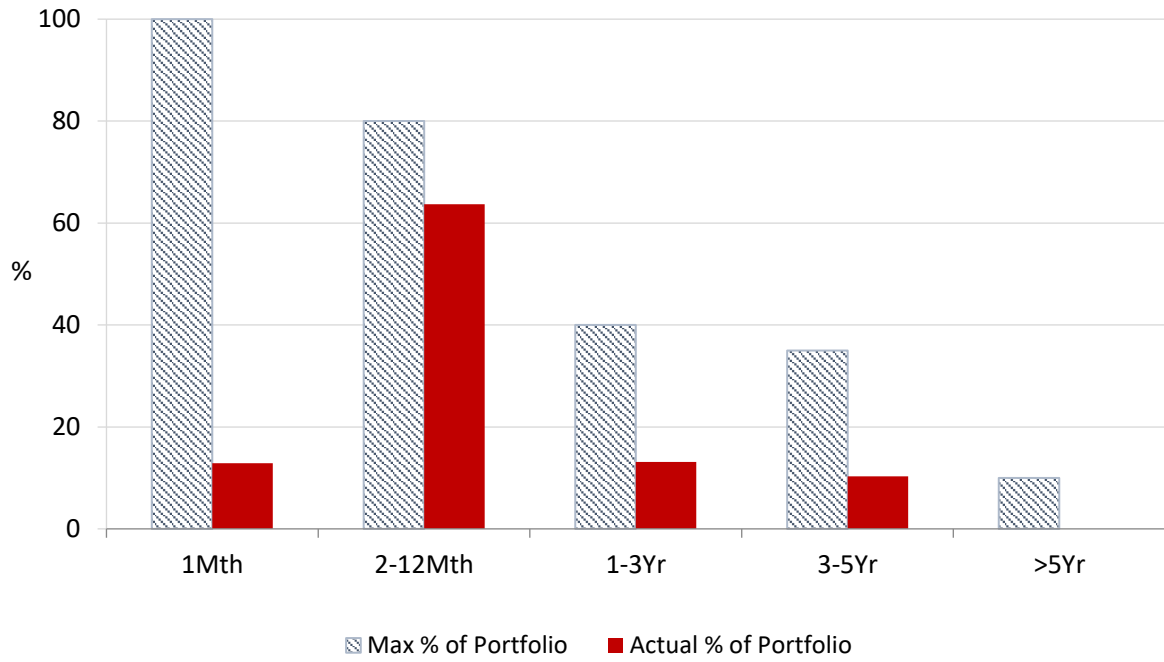
12 Month Rolling Averages
Actual Portfolio vs Strategic Enhanced Benchmark vs AusBond Benchmark vs 30 Day BBR Benchmark
March 2023



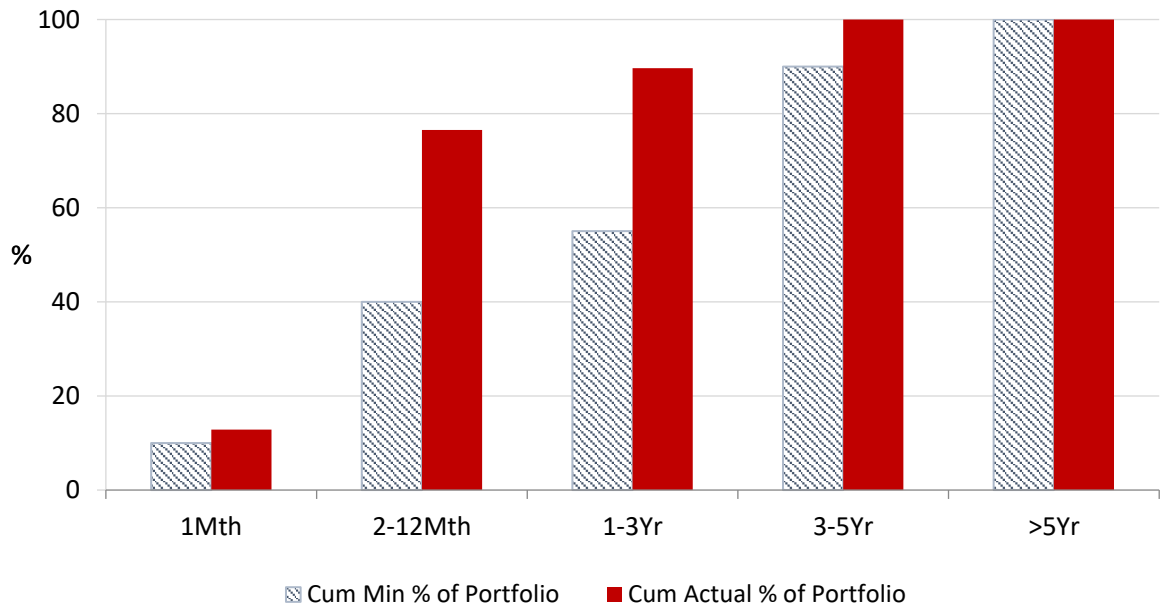
Monthly Results
Actual Portfolio vs Strategic Enhanced Benchmark vs AusBond Benchmark vs 30 Day BBR Benchmark
March 2023



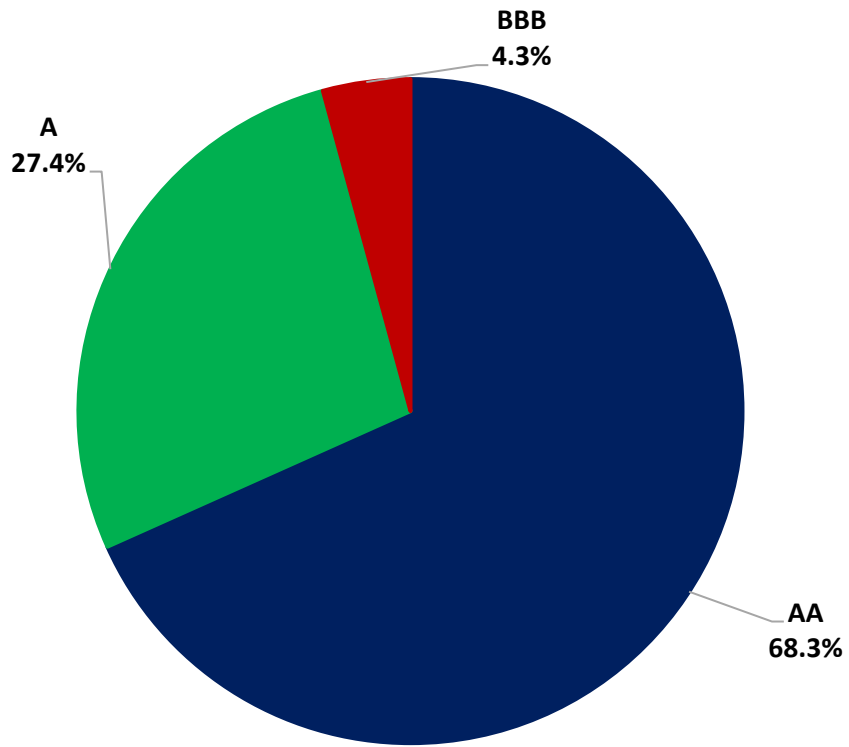
Portfolio Liquidity - Maximum Allowances as at 31 March 2023



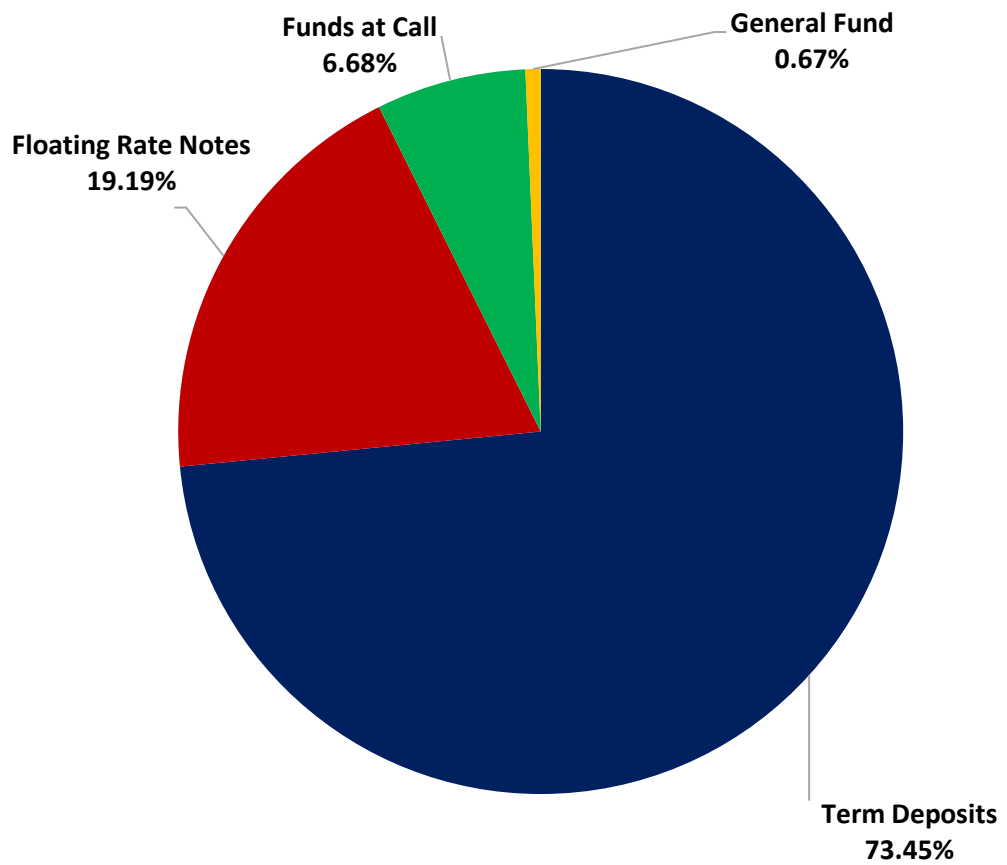
Portfolio Liquidity - Minimum Allocations as at 31 March 2023



Risk Profile as at 31 March 2023



Risk Profile as at 31 March 2023

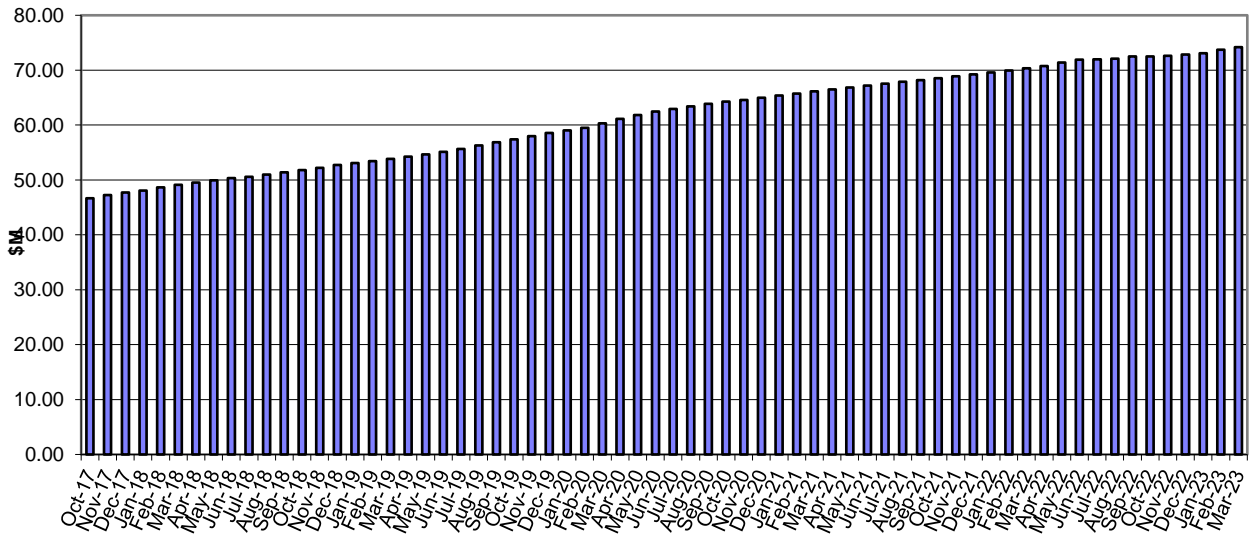


INVESTMENT AND CASH DISTRIBUTION BY FINANCIAL INSTITUTION

as at 31 March 2023

Institution Category	Financial Institution	Amount \$M	Financial Inst. %	Institution Cat. %
Australian Big 4 Bank (and related institutions)	ANZ Bank	26.0	3.5	
	Commonwealth Bank	225.9	30.7	
	National Aust Bank	63.9	8.7	
	Westpac Banking Corporation	171.9	23.4	
Big 4 Total		487.6		66.3
Other Australian ADIs and Australian subsidiaries of foreign institutions	Bank Australia Limited	10.0	1.4	
	Bank of Queensland	48.0	6.5	
	Bendigo & Adelaide Bank	25.0	3.4	
	Great Southern Bank (formerly Credit Union Australia)	6.5	0.9	
	ING Bank	75.0	10.2	
	Suncorp Bank	56.3	7.7	
	Macquarie Bank Ltd	10.0	1.4	
	Northern Territory Treasury Corporation	9.5	1.3	
Newcastle Permanent Building Society	7.3	1.0		
Other ADI Total		247.5		33.7
Grand Total		735.1	100.0	100.0

Cumulative Outperformance over AusBond Benchmark - 2016-2022



Cumulative Outperformance over 30 Day BBR Benchmark - 2016-2022

